

# 11<sup>+</sup>Myco MS-PREP<sup>®</sup>

Product Code: P128 / P128B

Immunoaffinity columns for use in conjunction with LC-MS/MS.  
For in vitro use only.

P128/V6/07.05.21

[www.r-biopharm.com](http://www.r-biopharm.com)



**R-BIOPHARM**  
**RHÔNE LTD**



# Contents

	Page
Test Principle.....	4
Reagents Not Provided.....	4
Accessory Products.....	4
Hazards.....	4
Recommended Methods and Application Notes.....	5
Decontamination.....	5
Storage & Shelf Life.....	5
Sampling.....	5
Sensitivity.....	5
Recoveries.....	5
Column Preparation.....	5
Elution.....	6
Sample Preparation.....	7
• Cereal.....	7
Preparation of Standards.....	8
• Aflatoxin Stock Solution.....	8
• Deoxynivalenol Stock Solution.....	8
• Fumonisin Stock Solution.....	8
• Ochratoxin Stock Solution.....	9
• T-2 & HT-2 Stock Solution.....	9
• Zearalenone Stock Solution.....	9
• Combined Working Solution.....	9
Calibration Curve.....	10
Recommended LC Conditions.....	11
Example LC-MS/MS Total Ion Count Chromatogram for Rye.....	13
Quality.....	14
Technical Support.....	14
Warranty.....	14

## Test Principle

The procedure is based on monoclonal antibody technology, which makes the test highly specific, sensitive, rapid and simple to perform.

The columns contain a gel suspension of monoclonal antibodies specific to the toxins of interest. Following extraction of the toxins the sample extract is filtered, diluted and passed slowly through the immunoaffinity column. Any toxins which are present in the sample are retained by the antibodies within the gel suspension. The column is washed to remove unbound material and the toxins are then released from the column following elution with solvent. The eluate is collected prior to analysis by LC-MS/MS.

The total extraction and clean-up time takes approximately 30 minutes to perform. The result is improved clean-up and concentration of the toxins from food and feed samples reducing ion suppression and removing the need to use matrix matched standards. This provides cleaner chromatography, improved sensitivity and greater accuracy. The columns also have the added advantage that they can be automated for large scale analysis of samples.

## Reagents Not Provided

- Distilled / Deionised Water (suitable for use with HPLC, e.g. MilliQ)
- Solvents (HPLC Grade Methanol)
- Phosphate Buffered Saline (PBS) (RP202)\*
- Sodium Chloride
- Mycotoxin Standards (Please refer to Preparation of Standards section)
- Ammonium Formate
- Formic Acid
- Sodium Hydroxide (to pH filtrate if required)

## Accessory Products

- Whatman No. 113 or No. 4 Filter Paper
- Glass Microfiber Filter Paper
- Immunoaffinity Column Rack (CR1)\*
- Immunoaffinity Column Accessory Pack (AP01)\*

\* Available from R-Biopharm. Please contact your local R-Biopharm distributor for further information.

## Hazards

Mycotoxins are very hazardous substances. Only laboratories equipped to handle toxic materials and solvents should perform analyses. Suitable protective clothing, including gloves, safety glasses and lab coats should be worn throughout the analysis.

Flammable solvents should be stored in an explosion-proof cabinet. Use a chemical hood and protective equipment as applicable.

Contact your local R-Biopharm distributor for a Material Safety Data Sheet for further information if required.

## Recommended Methods and Application Notes

Methods are available for all matrices covered by legislation as well as additional commodities. Deviation from the methods described in our Instructions For Use and Application Notes may not result in optimum results. Please contact your local R-Biopharm distributor for further information.

### Decontamination

Prior to disposal, excess standard solutions should be treated with at least one-tenth their volume of 5 % sodium hypochlorite. Labware and contaminated waste should be immersed in 5 % sodium hypochlorite solution for 30 minutes followed by the addition of 5 % acetone for 30 minutes. Flush with copious amounts of water before disposal. After decontamination labware should be thoroughly washed. Incinerate waste if regulations permit.

### Storage & Shelf Life

The columns have an expiry of 18 months from date of manufacture if stored at 2 - 8 °C or 12 months from date of manufacture if stored at 21 - 25 °C. Do not freeze.

Ensure that the column has not dried out and contains buffer above the gel. It is important to note that the antibody included in the immunoaffinity column can be denatured by extreme temperature or pH change.

### Sampling

A representative sample should be obtained by following one of the officially recognised sampling procedures. It is recommended that a minimum of 1 kg of representative sample is finely ground and a portion (10 - 50 g dependent on method used) of this is removed and extracted.

### Sensitivity

The sensitivity is dependent on the final detection system employed by the analyst. However the test sensitivity may be improved if required by increasing the volume of sample passed through the immunoaffinity column. Please note that the ratio of solvent to phosphate buffered saline (PBS) should be maintained.

### Recoveries

If an analyst wishes to account for losses during extraction it is recommended that a spiked sample of the same commodity type as the material being tested be analysed following the complete procedure as a reference standard. The recoveries obtained with the spiked sample can then be used to correct the results obtained with the test sample.

### Column Preparation

Immunoaffinity columns should be at ambient temperature before use. Remove the cap from the top of the column and discard. Firmly attach the column to a glass syringe barrel using an adapter and place in an immunoaffinity column rack or clamp stand.

## Elution

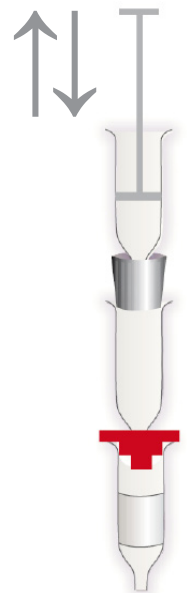
In order to fully elute the toxin/s from the immunoaffinity column it is vital that the solvent is in contact with the antibody within the gel suspension for a sufficient period of time. This ensures that all of the bonds between the antibody and the toxin are broken, ultimately releasing all of the toxin from the column for analysis with the detection system of choice

To ensure that the solvent is in contact with the antibody gel for a sufficient period of time any of the following elution methods can be used: -

**Backflushing (this is the preferred method of choice at R-Biopharm):** backflush by gently raising and lowering the syringe plunger during passage of the solvent through the column. This process will reverse the direction of flow of the eluate through the gel. This should be repeated 3 times before collecting the eluate. Proceed to the next step in the method.

**Application of small volumes of solvent:** apply the volume of solvent required for elution in two or three smaller aliquots. Allow each aliquot to remain in contact with the gel suspension for a minimum of 30 seconds before allowing each to pass fully through the gel suspension for collection. Proceed to the next step in the method.

**Incubation with solvent:** apply the full volume of solvent required for elution and allow 2-3 drops of the solvent to pass through the column for collection. Allow the remainder of the solvent to remain in contact with the gel suspension for a minimum of 60 seconds before allowing it to pass through the gel suspension for collection. Proceed to the next step in the method.



## Sample Preparation

### • Cereal

This method has been tested on a number of cereals including maize, barley, cornflakes and wheat and cereal based products such as biscuits and pasta.

1. Weigh 25 g of ground sample and 5 g of sodium chloride into a 1 litre capacity, solvent resistant blender jar.
2. Add 100 ml of 70 % methanol and blend at high speed for 2 minutes.
3. Filter the sample through Whatman No. 113 or No. 4 filter paper, or centrifuge at 4,000 rpm for 10 minutes.
4. Dilute 5 ml of the filtrate with 60 ml of phosphate buffered saline (PBS).
5. Filter the diluted extract through glass microfiber filter paper.
6. Pass 20 ml of the filtrate (equivalent to 0.38 g of sample) through the column at a flow rate of 2 ml per minute (or the sample can be allowed to pass through the column by gravity if preferred). A slow, steady flow rate is essential for the capture of the toxin by the antibody.
7. Wash the column by passing 20 ml of water through at a flow rate of approximately 5 ml per minute. Pass air through the column to remove residual liquid.
8. Elute the toxins from the column at a flow rate of 1 drop per second using 1.5 ml of 100 % methanol and collect in an amber glass vial. Please refer to the Elution section for further information.
9. Following elution pass 1.5 ml of water through the column and collect in the same vial to give a 3 ml total volume.
10. Inject 50  $\mu$ l onto the LC-MS/MS system.

## Preparation of Standards

### • Aflatoxin Stock Solution

Preparation of 1,000 ng/ml Aflatoxin Stock Solutions:

1. Ready-to-use AFLASTANDARD (P22 / P22A, 1,000 ng/ml) is available from R-Biopharm.

or

1. Alternatively, crystalline powder of aflatoxins B1, B2, G1 and G2 can be purchased. Contact your local R-Biopharm distributor for further information. If required, dilute or reconstitute as per the instructions provided and leave overnight in the dark at room temperature to give a stock concentrate.
2. This is then used to prepare a 1,000 ng/ml aflatoxin B1, B2, G1 and G2 stock solution.

Note: The ratio of B1, B2, G1 and G2 may vary in each standard. Please note the correct ratio for the standard purchased.

### • Deoxynivalenol Stock Solution

Preparation of 100,000 ng/ml deoxynivalenol stock solution:

1. Crystalline powder of deoxynivalenol can be purchased. Contact your local R-Biopharm distributor for further information. If required, dilute or reconstitute as per the instructions provided and leave overnight in the dark at room temperature to give a stock concentrate.
2. This is then used to prepare a 100,000 ng/ml deoxynivalenol stock solution.

### • Fumonisin Stock Solution

Preparation of 150,000 ng/ml fumonisin stock solution:

1. Crystalline powder of fumonisin can be purchased. Contact your local R-Biopharm distributor for further information. If required, dilute or reconstitute as per the instructions provided and leave overnight in the dark at room temperature to give a stock concentrate.
2. This is then used to prepare a 150,000 ng/ml fumonisin (FB1 and FB2) stock solution.

Note: The ratio of FB1 to FB2 may vary in each standard. Please note the correct ratio for the standard purchased.



## • Ochratoxin Stock Solution

Preparation of 1,000 ng/ml ochratoxin A Stock Solution:

1. Ready-to-use OCHRASTANDARD (P11 / P11A, 1,000 ng/ml) is available from R-Biopharm.  
or
1. Alternatively, crystalline powder of ochratoxin A can be purchased. Contact your local R-Biopharm distributor for further information. If required, dilute or reconstitute as per the instructions provided and leave overnight in the dark at room temperature to give a stock concentrate.
2. This is then used to prepare a 1,000 ng/ml ochratoxin A stock solution.

## • T-2 & HT-2 Stock Solution

Preparation of 20,000 ng/ml T-2 and HT-2 toxin stock solutions:

1. Crystalline powder of T-2 and HT-2 can be purchased. Contact your local R-Biopharm distributor for further information. If required, dilute or reconstitute as per the instructions provided and leave overnight in the dark at room temperature to give a stock concentrate.
2. This is then used to prepare a 40,000 ng/ml T-2 and HT-2 (20,000 ng/ml each toxin) stock solution.

## • Zearalenone Stock Solution

Preparation of 5,000 ng/ml zearalenone stock solution:

1. Crystalline powder of zearalenone can be purchased. Contact your local R-Biopharm distributor for further information. If required, dilute or reconstitute as per the instructions provided and leave overnight in the dark at room temperature to give a stock concentrate.
2. This is then used to prepare a 5,000 ng/ml zearalenone stock solution.

## • Combined Working Solution

1. Take 10 ml of 50 % methanol and remove 1.25 ml to waste.
2. Add the following volumes of stock solutions to prepare combined working solution.

Toxin	Stock Solution Concentration (ng/ml)	Volume of Stock Solution Added (µl)	Working Solution Concentration (ng/ml)
Aflatoxins	1,000 ng/ml (250 ng/ml each)	50 µl	1.25 ng/ml (each)
Deoxynivalenol	100,000 ng/ml	500 µl	5,000 ng/ml
Fumonisin	150,000 ng/ml (total)	100 µl	1,500 ng/ml (total)
Ochratoxin A	1,000 ng/ml	50 µl	5 ng/ml
T-2 & HT-2	40,000 ng/ml (20,000 ng/ml each)	50 µl	100 ng/ml (each)
Zearalenone	5,000 ng/ml	500 µl	250 ng/ml

## Calibration Curve

It is recommended to run at least a 3 - 6 point calibration curve. In constructing a suitable curve the levels of the calibration standards should bracket or include the range of expected results. The diluted standard solutions should be prepared fresh on the day of analysis and used within a 24 hour period.

Example of how to prepare a five point calibration curve (can be modified according to legislative requirements or contamination levels):

1. Standard 5: Dilute 1 ml of combined working solution with 1 ml of 50 % methanol.
2. Standard 4: Take 1 ml of combined standard 5 and add 1 ml of 50 % methanol.
3. Standard 3: Take 1 ml of combined standard 4 and add 1 ml of 50 % methanol.
4. Standard 2: Take 1 ml of combined standard 3 and add 1 ml of 50 % methanol.
5. Standard 1: Take 1 ml of combined standard 2 and add 1 ml of 50 % methanol.

Toxin	Standard 5 (ng/ml)	Standard 4 (ng/ml)	Standard 3 (ng/ml)	Standard 2 (ng/ml)	Standard 1 (ng/ml)
Aflatoxins	0.625 (each)	0.312 (each)	0.156 (each)	0.078 (each)	0.039 (each)
Deoxynivalenol	2,500	1,250	625	312	156
Fumonisin	750 (total)	375 (total)	188 (total)	94 (total)	47 (total)
Ochratoxin A	2.5	1.25	0.62	0.31	0.16
T-2 & HT-2	50 (each)	25 (each)	12.5 (each)	6.25 (each)	3.12 (each)
Zearalenone	125	62.5	31.2	15.6	7.8

## Recommended LC Conditions

LC Conditions			
Guard Cartridge	Phenomenex Gemini C18 4 mm x 2 mm or equivalent		
Analytical Column	Phenomenex Gemini 5 µm C18 110 A, 150 mm x 3 mm or equivalent		
Mobile Phase	Solution A: 1 mM Ammonium Formate and 0.1 % Formic Acid in 5 % Methanol  Solution B: 1 mM Ammonium Formate and 0.1 % Formic Acid in 98 % Methanol  Prepare fresh on day of analysis.		
Gradient Conditions	Time (min)	% Solution A	% Solution B
	0	80	20
	0.1	80	20
	10	10	90
	15	10	90
	15.1	80	20
	25	80	20
HPLC Pump	To deliver mobile phase		
Flow Rate	0.3 ml per minute		
Column Heater	Maintain guard and analytical columns at 40 °C		
Integrator / Data Control System	From preferred supplier		
Injector	Autosampler / Rheodyne valve		
Injection Volume	50 µl		

### Mass Spectrometry Conditions

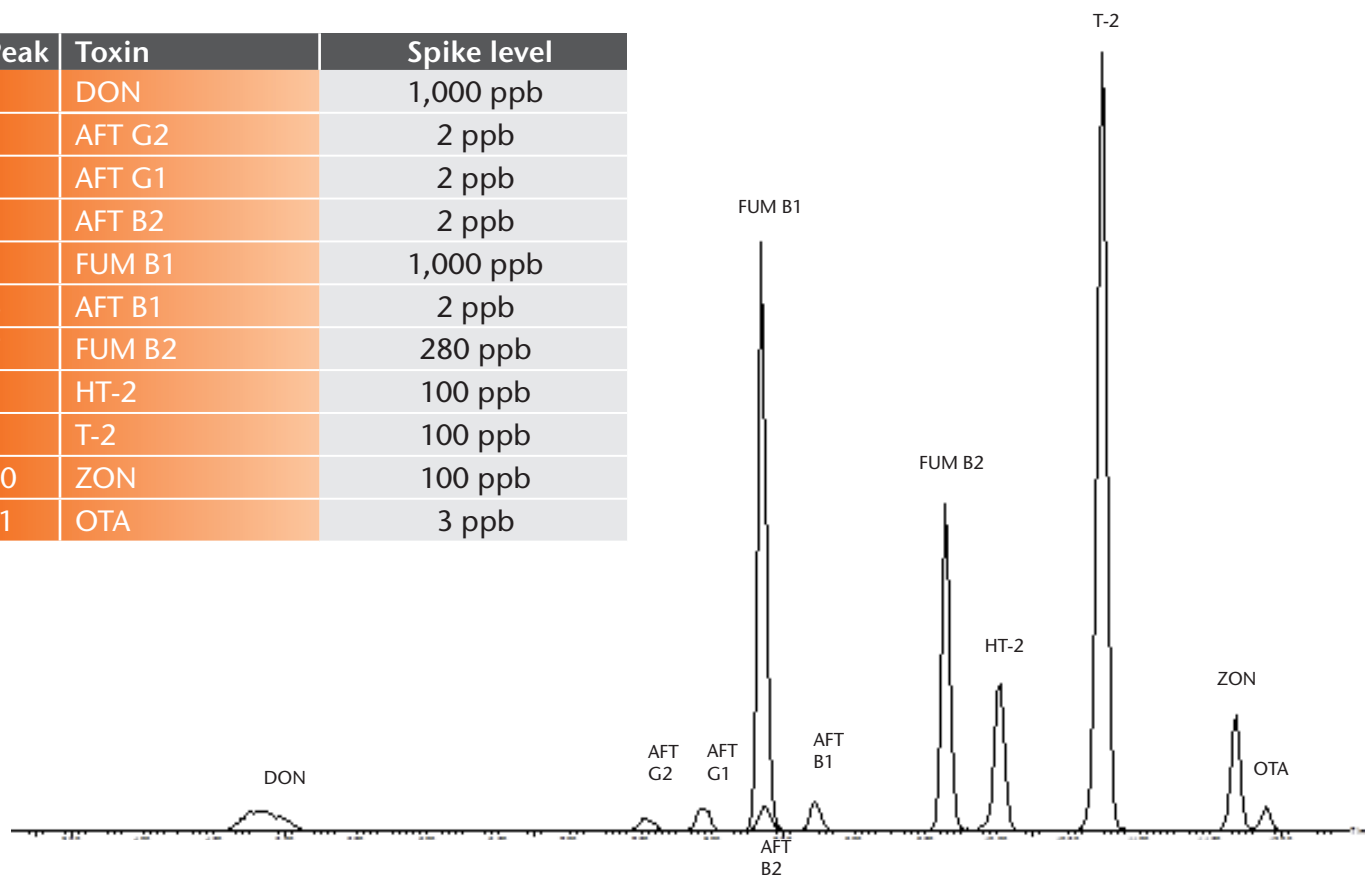
Instrument	Waters® ACQUITY TQ Detector with Electrospray Ionisation
Mode	Multiple Reaction Monitoring (MRM) Mode with positive polarity
Capillary Voltage	+1,500 Volts
Source Temperature	150 °C
Desolvation Gas Temperature	350 °C
Desolvation Gas Flow	600 l/hr (N)
Cone Gas Flow	50 l/hr (N)

### Instrument Setting

Time Segment (min)	Toxin	Precursor Ion (m/z)	Product Ion (m/z)	Dwell Time (s)	Cone Voltage (V)	Collision Voltage (eV)
3.0 - 6.0	DON	297.01 [M+H] <sup>+</sup>	249.10 (Quantifier)	0.661	24	10
			231.08 (Qualifier)			12
6.5 - 9.5	AFT G2	331.01 [M+H] <sup>+</sup>	245.13 (Quantifier)	0.105	48	32
			189.07 (Qualifier)			40
6.5 - 9.5	AFT G1	329.01 [M+H] <sup>+</sup>	243.06 (Quantifier)	0.105	50	28
			199.88 (Qualifier)			44
6.5 - 9.5	AFT B2	315.07 [M+H] <sup>+</sup>	287.12 (Quantifier)	0.105	56	26
			259.15 (Qualifier)			30
6.5 - 9.5	AFT B1	313.00 [M+H] <sup>+</sup>	284.93 (Quantifier)	0.105	52	22
			241.10 (Qualifier)			40
6.5 - 9.5	FUM B1	722.39 [M+H] <sup>+</sup>	334.39 (Quantifier)	0.105	52	40
			352.40 (Qualifier)			38
8.5 - 10.5	FUM B2	706.39 [M+H] <sup>+</sup>	336.40 (Quantifier)	0.105	56	40
			318.39 (Qualifier)			42
9.5 - 11	HT-2	442.21 [M+NH <sub>4</sub> ] <sup>+</sup>	263.16 (Quantifier)	0.272	18	12
			215.10 (Qualifier)			14
9.5 - 11.5	T-2	484.21 [M+NH <sub>4</sub> ] <sup>+</sup>	305.14 (Quantifier)	0.272	26	14
			245.12 (Qualifier)			14
10.5 - 13.0	OTA	403.9 [M+H] <sup>+</sup>	239.0 (Quantifier)	0.428	32	22
			358.1 (Qualifier)			14
10.5 - 12.5	ZON	319.11 [M+H] <sup>+</sup>	283.17 (Quantifier)	0.256	22	12
			187.1 (Qualifier)			20

## Example LC-MS/MS Total Ion Count Chromatogram for Rye

Peak	Toxin	Spike level
1	DON	1,000 ppb
2	AFT G2	2 ppb
3	AFT G1	2 ppb
4	AFT B2	2 ppb
5	FUM B1	1,000 ppb
6	AFT B1	2 ppb
7	FUM B2	280 ppb
8	HT-2	100 ppb
9	T-2	100 ppb
10	ZON	100 ppb
11	OTA	3 ppb



## Quality

RBR products are developed, manufactured, tested and dispatched under an ISO 9001 registered Quality Management System, guaranteeing a consistent product, which always meets our performance specifications. Our products have been used in many collaborative studies to develop standard European and International Methods and are widely used by key institutions, food companies and government laboratories. Customer references for RBR products are available on request..

## Technical Support

RBR understand that from time to time users of our products may need assistance or advice. Therefore, we are pleased to offer the following services to our customers:

- Analysis of problem samples.
- Application notes for difficult samples.
- References from the RBR library.
- Installation and support of the KOBRA® CELL.
- Advice on detection parameters.
- Advice on preparation and handling of standards.
- Updates on legislation, sampling and other news by e-mail.
- Provision of spiked samples.

Please contact your local R-Biopharm distributor for further information.

## Warranty

R-Biopharm Rhône Ltd makes no warranty of any kind, express or implied, except that all products made by R-Biopharm Rhône Ltd are made with materials of suitable quality. If any materials are defective, R-Biopharm Rhône Ltd will provide a replacement product. The user assumes all risk and liability resulting from the use of R-Biopharm Rhône Ltd products and procedures. R-Biopharm Rhône Ltd shall not be liable for any damages, including special or consequential damages, loss or expense arising directly or indirectly from the use of R-Biopharm Rhône Ltd products or procedures.



**R-Biopharm Rhône Ltd**  
Block 10 Todd Campus  
West of Scotland Science Park  
Acre Road, Glasgow G20 0XA  
[www.r-biopharm.com](http://www.r-biopharm.com)