

EASI-EXTRACT[®] STERIGMATOCYSTIN

Product Code: P125 / P125B

Immunoaffinity columns for use in conjunction with HPLC or LC-MS/MS.
For *in vitro* use only.

P125/V2/03.09.18

www.r-biopharm.com



R-BIOPHARM
RHÔNE LTD

Contents

Page

Test Principle.....	4
Reagents Not Provided.....	4
Accessory Products.....	4
Hazards.....	4
Decontamination.....	5
Storage & Shelf Life.....	5
Sampling.....	5
Sensitivity.....	5
Recoveries.....	5
Column Preparation.....	5
Backflushing.....	6
Application Notes Available.....	6
Sample Preparation.....	7
• Cereal.....	7
Preparation of Standards.....	8
Calibration Curve.....	8
Recommended HPLC Conditions.....	9
Typical HPLC Trace for Analysis of Sterigmatocystin Using EASI-EXTRACT® STERIGMATOCYSTIN	
Immunoaffinity Columns.....	10
• Oats (Spiked at 1.5 ppb).....	10
Quality.....	11
Technical Support.....	11
Warranty.....	11

Test Principle

The procedure is based on monoclonal antibody technology, which makes the test highly specific, sensitive, rapid and simple to perform.

The columns contain a gel suspension of monoclonal antibody specific to the toxin of interest. Following extraction of the toxin the sample extract is filtered, diluted and passed slowly through the immunoaffinity column. Any toxin which is present in the sample is retained by the antibody within the gel suspension. The column is washed to remove unbound material and the toxin is then released from the column following elution with solvent. The eluate is collected, evaporated and reconstituted prior to analysis by HPLC or LC-MS/MS.

The total extraction and clean-up time takes approximately 20 minutes to perform. The result is improved clean-up and concentration of the toxin from food and feed samples giving a much cleaner chromatogram and therefore providing more accurate and sensitive detection. The columns also have the added advantage that they can be automated for large scale analysis of samples.

Reagents Not Provided

- Distilled / Deionised Water (suitable for use with HPLC, e.g. MilliQ)
- Solvents (HPLC Grade Methanol and Acetonitrile)
- Phosphate Buffered Saline (PBS) (RP202)*
- Sterigmatocystin Standard (Please refer to Preparation of Standards section)

Accessory Products

- Whatman No. 113 or No. 4 Filter Paper (P66 / P67)*
- Immunoaffinity Column Rack (CR1)*
- Immunoaffinity Column Accessory Pack (AP01)*

* Available from R-Biopharm. Please contact your local R-Biopharm distributor for further information.

Hazards

Mycotoxins are very hazardous substances. Only laboratories equipped to handle toxic materials and solvents should perform analyses. Suitable protective clothing, including gloves, safety glasses and lab coats should be worn throughout the analysis.

Flammable solvents should be stored in an explosion-proof cabinet. Use a chemical hood and protective equipment as applicable.

Contact your local R-Biopharm distributor for a Material Safety Data Sheet for further information if required.

Decontamination

Prior to disposal, excess standard solutions should be treated with at least one-tenth their volume of 5 % sodium hypochlorite. Labware and contaminated waste should be immersed in 5 % sodium hypochlorite solution for 30 minutes followed by the addition of 5 % acetone for 30 minutes. Flush with copious amounts of water before disposal. After decontamination labware should be thoroughly washed. Incinerate waste if regulations permit.

Storage & Shelf Life

The columns have an expiry of 18 months from date of manufacture if stored at 2 - 8 °C or 12 months from date of manufacture if stored at 21 - 25 °C. Do not freeze.

Ensure that the column has not dried out and contains buffer above the gel. It is important to note that the antibody included in the immunoaffinity column can be denatured by extreme temperature or pH change.

Sampling

A representative sample should be obtained by following one of the officially recognised sampling procedures. It is recommended that a minimum of 1 kg of representative sample is finely ground and a portion (10 - 50 g dependent on method used) of this is removed and extracted.

Sensitivity

The sensitivity is dependent on the final detection system employed by the analyst. However the test sensitivity may be improved if required by increasing the volume of sample passed through the immunoaffinity column. Please note that the ratio of solvent to phosphate buffered saline (PBS) should be maintained.

Recoveries

If an analyst wishes to account for losses during extraction it is recommended that a spiked sample of the same commodity type as the material being tested be analysed following the complete procedure as a reference standard. The recoveries obtained with the spiked sample can then be used to correct the results obtained with the test sample.

Column Preparation

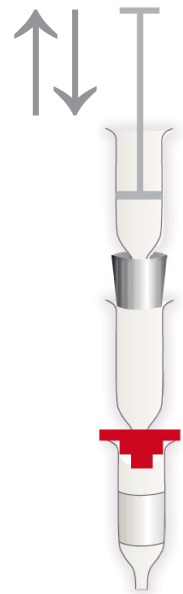
Immunoaffinity columns should be at ambient temperature before use. Remove the cap from the top of the column and discard. Firmly attach the column to a glass syringe barrel using an adapter and place in an immunoaffinity column rack or clamp stand.

Backflushing

Backflushing is carried out to increase the time the solvent is in contact with the antibody within the gel suspension ensuring that all of the toxin is eluted. Backflush by gently raising and lowering the syringe plunger during passage of the solvent through the column. This process will reverse the direction of flow of the eluant. This should be repeated 3 times.

Application Notes Available

Methods are available for additional commodities. Please contact your local R-Biopharm distributor for further information.



Sample Preparation

• Cereal

This method has been tested on a number of cereals including oats, wheat, maize, rye and rice.

1. Weigh 25 g of ground sample into a 1 litre capacity, solvent resistant blender jar.
2. Add 100 ml of 80 % acetonitrile and blend at high speed for 2 minutes.
3. Filter the sample through Whatman No. 113 or No. 4 filter paper, or centrifuge at 4,000 rpm for 10 minutes.
4. Filter the filtrate through glass microfibre filter paper.
5. Dilute 4 ml of filtrate with 56 ml of phosphate buffered saline (PBS) solution.
6. Pass 30 ml of the filtrate (equivalent to 0.5 g of sample) through the column at a flow rate of 2 ml per minute (or the sample can be allowed to pass through the column by gravity if preferred). A slow, steady flow rate is essential for the capture of the toxins by the antibody.
7. Wash the column by passing 10 ml of PBS followed by a 10 ml water wash. Pass through the column at a flow rate of approximately 5 ml per minute. Pass air through the column to remove residual liquid.
8. Elute the toxins from the column at a flow rate of 1 drop per second using 2 ml of 100 % acetonitrile and collect in a glass tube. Backflushing is recommended. Please refer to the Backflushing section for further information.
9. Evaporate the eluate to dryness under air at 50 - 60 °C.
10. Reconstitute with 100 µl of 100 % acetonitrile and 100 µl of water. Vortex for 20 seconds.
11. Inject 100 µl of reconstituted eluate onto the HPLC system.

Preparation of Standards

Preparation of 1,000 ng/ml sterigmatocystin stock solution:

1. Sterigmatocystin standards can be purchased. If required, dilute or reconstitute as per the instructions provided and leave overnight in the dark at room temperature to give a stock concentrate.
2. This is then used to prepare a 1,000 ng/ml sterigmatocystin stock solution.

Calibration Curve

It is recommended to run at least a 3 - 6 point calibration curve. In constructing a suitable curve the levels of the calibration standards should bracket or include the range of expected results. The diluted standard solutions should be prepared fresh on the day of analysis and used within a 24 hour period.

To prepare a five point calibration curve:

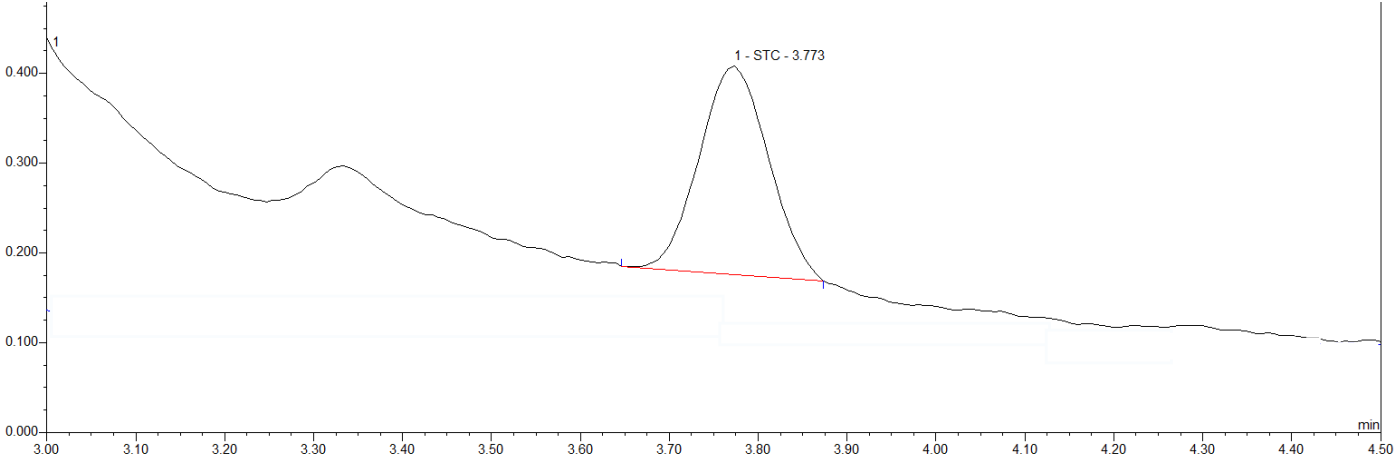
1. Standard 5:
 - Measure 2.5 ml of acetonitrile into an amber vial and remove 75 μ l to waste.
 - Add 75 μ l of 1,000 ng/ml stock solution and 2.5 ml of water to give a 15 ng/ml sterigmatocystin solution.
2. Standard 4: Take 2.5 ml of standard 5 and add 2.5 ml of 50 % acetonitrile (equivalent to 7.5 ng/ml).
3. Standard 3: Take 2.5 ml of standard 4 and add 2.5 ml of 50 % acetonitrile (equivalent to 3.75 ng/ml).
4. Standard 2: Take 2.5 ml of standard 3 and add 2.5 ml of 50 % acetonitrile (equivalent to 1.875 ng/ml).
5. Standard 1: Take 2.5 ml of standard 2 and add 2.5 ml of 50 % acetonitrile (equivalent to 0.9375 ng/ml).
6. Inject 100 μ l of each standard onto the HPLC system.

Recommended HPLC Conditions

HPLC Conditions	
Guard Cartridge	KrudKatcher 0.5 µm depth filter or equivalent
Analytical Column	Hypersil Gold 3 µm, 4.6 mm x 150 mm (Thermo) or equivalent
Mobile Phase	Acetonitrile : Water (60 : 40 v/v)
HPLC Pump	To deliver mobile phase
Flow Rate	1.0 ml/minute
UV Detector	250 nm or 325 nm Alternatively, dual wavelength: 250 nm and 325 nm, report at 325 nm
Column Heater	Maintain guard and analytical columns at 30 °C
Integrator / Data Control System	From preferred supplier
Injector	Autosampler / Rheodyne valve
Injection Volume	100 µl

Typical HPLC Trace for Analysis of Sterigmatocystin Using EASI-EXTRACT® STERIGMATOCYSTIN Immunoaffinity Columns

- Oats (Spiked at 1.5 ppb)



Quality

RBR products are developed, manufactured, tested and dispatched under an ISO 9001 registered Quality Management System, guaranteeing a consistent product, which always meets our performance specifications. Our products have been used in many collaborative studies to develop standard European and International Methods and are widely used by key institutions, food companies and government laboratories. Customer references for RBR products are available on request.

Technical support

RBR understand that from time to time users of our products may need assistance or advice. Therefore, we are pleased to offer the following services to our customers:

- Analysis of problem samples.
- Application notes for difficult samples.
- References from the RBR library.
- Installation and support of the KOBRA® CELL.
- Advice on detection parameters.
- Advice on preparation and handling of standards.
- Updates on legislation, sampling and other news by e-mail.
- Provision of spiked samples.

Please contact your local R-Biopharm distributor for further information.

Warranty

R-Biopharm Rhône Ltd makes no warranty of any kind, express or implied, except that all products made by R-Biopharm Rhône Ltd are made with materials of suitable quality. If any materials are defective, R-Biopharm Rhône Ltd will provide a replacement product. The user assumes all risk and liability resulting from the use of R-Biopharm Rhône Ltd products and procedures. R-Biopharm Rhône Ltd shall not be liable for any damages, including special or consequential damages, loss or expense arising directly or indirectly from the use of R-Biopharm Rhône Ltd products or procedures.

R-Biopharm Rhône Ltd
Block 10 Todd Campus
West of Scotland Science Park
Acre Road, Glasgow G20 0XA
www.r-biopharm.com